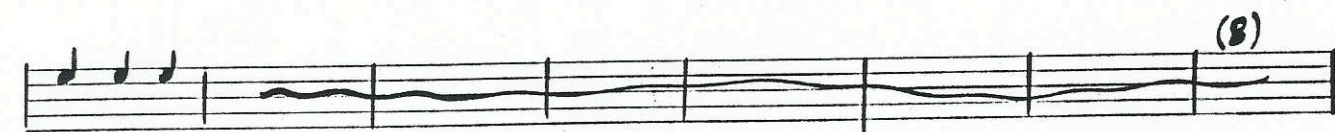
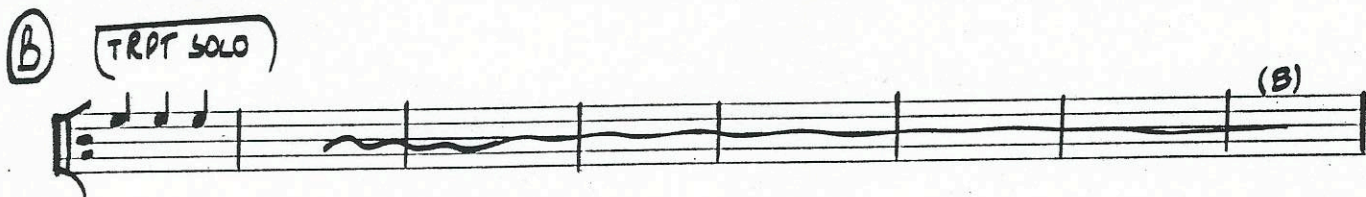
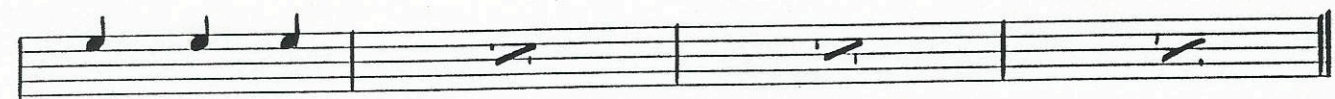
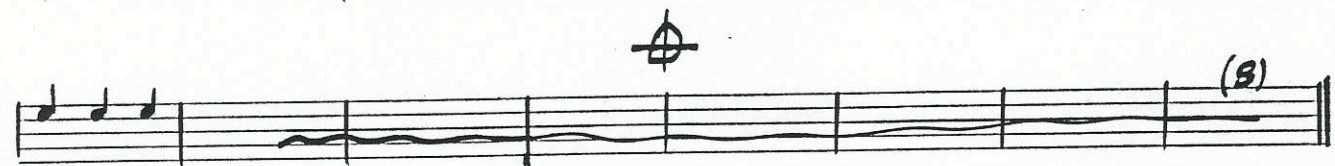
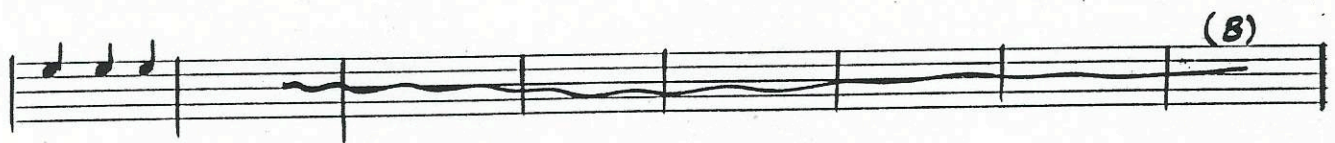
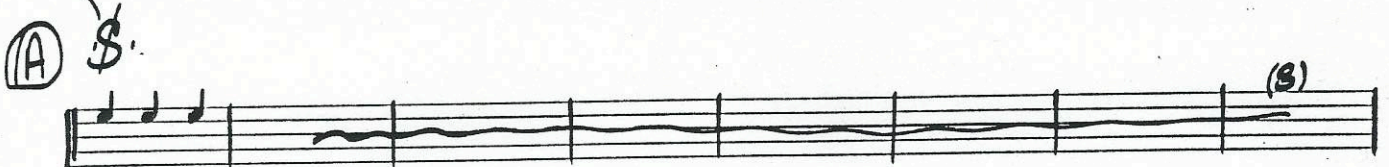
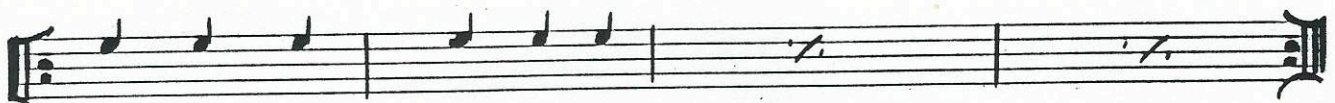


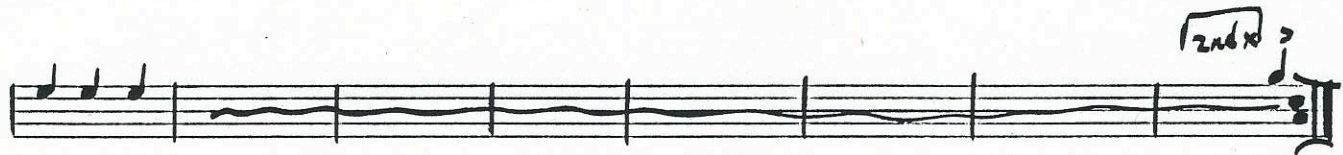
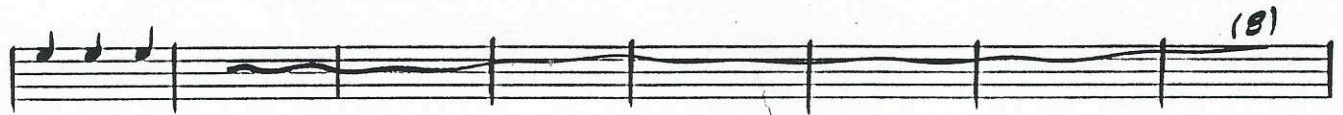
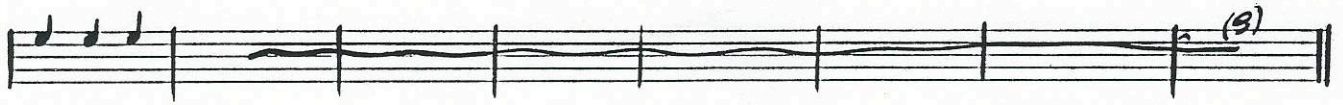
DRUMS

COMPOSED AND ARRANGED BY: GERALD WILSON

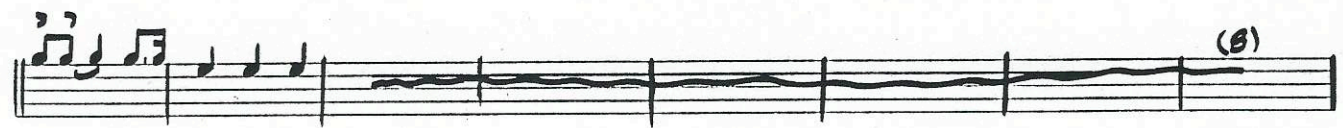
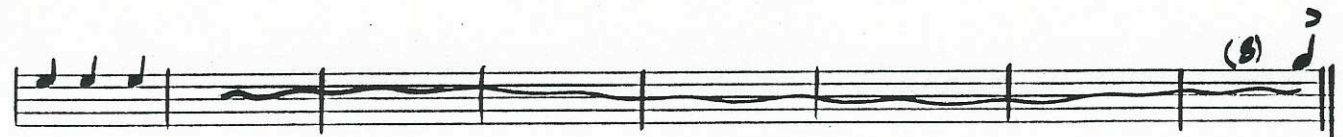
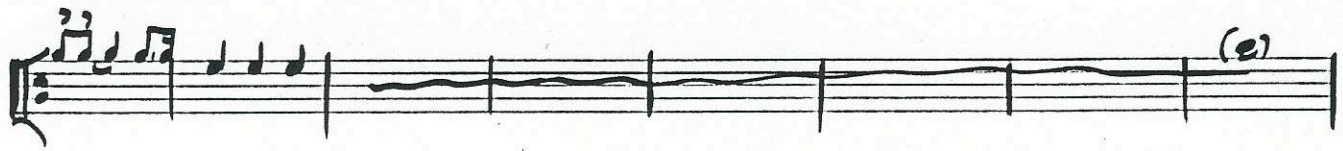
BLUES FOR YNA YNA

SWING





©



D

PLAY 48 RHYTHM SOLO

E

B/S

Handwritten musical notation for section E, consisting of three staves of rhythmic notation. The first staff begins with a treble clef and a key signature of one sharp (F#). The notation includes quarter notes, eighth notes, and rests, with some notes marked with a slash. The second and third staves continue the rhythmic pattern.

D.S.

CODA

Handwritten musical notation for the CODA section, consisting of one staff of rhythmic notation with quarter notes and rests.

POCO A POCO ACCELERANDO THEN POCO A POCO RTARDO

Four empty musical staves provided for additional notation.